



2023 - 2024
COMPANY PROFILE
GLOBAL IN

Innovative Designs Tailored to Your Lifestyle

- www.gtc-qatar.com







“

WELCOME TO GLOBAL IN TRADING &
CONSTRUCTING, WHERE INNOVATION
MEETS EXCELLENCE

As a leader in the industry, we embark
on a journey to redefine global standards
in trading and construction. Join us in
building a world of possibilities, where
quality and commitment converge
seamlessly. ”

CONTENTS

About Global In	4	Façade Construction Specialists	21	Kinder Academy Nursery	47
Our Vision	6	FACADE CONSTRUCTION SOLUTIONS	22	Wyndam Regency Hotel	52
Our Mission	7	Facades Composites Decorative	23	Al-Kharaitiyat Villa	56
GLOBAL IN SERVICES	8	Deadline	24	Projects Collection	64
Our Services	9	Quality Policy	25	Global In's Documents	81
Supplies Trading	10	Health, Safety and Environmental Policy	26		
Design Services	12	Global In Capabilities	27		
Construction Services	14	Financial Capability	29		
The fit-out Services	16	GLOBAL IN EXPERIENCE	30		
Project Management	18	Beauty Salon	31		
FACADE CONSTRUCTION SPECIALISTS	20	Hilton Garden Inn	41		



ABOUT GLOBAL IN

Graceful, timeless interior & exterior luxurious architecture, and exquisite decoration materials, catering for prominent clients in the Middle East & GCC for more than 17 years.

Created by a globally diverse, highly experienced and knowledgeable team of engineers & interior designers and architects, with a professional attitude towards achieving the highest standards, the company has created a wave in the field of architectural and engineering trading and consultation services across Lebanon, UAE & Qatar.

With a record of high quality and timely completion, our projects are always executed according to the client's precise specifications, highest expectation & accurate budgets.



Global's team focuses on sustainable, innovative and breakthrough design material and solutions that create ideal end results.



“

Innovative Designs
Tailored to Your Lifestyle ”



OUR VISION

In alignment with our unwavering commitment to excellence and guided by a set of enduring core values, 'Global In' envisions standing as an esteemed, sustainable, and coveted premier luxury interior and exterior design firm within the Middle Eastern marketplace.

Our vision encompasses the delivery of state-of-the-art, innovative designs coupled with an unparalleled commitment to superior quality finishing. We aspire to perpetually draw upon our extensive professional expertise, building upon the foundation of numerous years of experience.

'Global In' is dedicated to consistently providing exclusive design services that not only meet but exceed the exacting requirements of our esteemed partners and clients, fostering complete satisfaction.

This vision serves as the bedrock of our storied history and cultural values in design, remaining the master key that unlocks the vast potential within our future endeavors.

**"OUR VISION IS TO TRANSLATE YOUR DREAMS
INTO REALITIES"**

OUR MISSION

To transcend the ordinary and redefine the realm of possibility, 'Global In' pledges to seamlessly transform the aspirations woven within our clients' visionary designs into a sublime reality. We distinguish ourselves not merely through impeccable execution but also by unwaveringly adhering to project deadlines and budgetary parameters.

Our commitment extends beyond the conventional; we embark on a mission to craft experiences that transcend expectations, blending functionality with unparalleled quality and innovation. 'Global In' seeks to etch indelible impressions, ensuring every collaboration becomes the epitome of conversation for a lifetime.

In our relentless pursuit of excellence, we aspire to establish the zenith of sophistication and set a new benchmark for superior quality in both exterior and interior design.

Our mission is not just to meet standards but to redefine and elevate them, presenting a tapestry of refined elegance and innovation that resonates with the very essence of our clients' aspirations.





GLOBAL IN
SERVICES



OUR SERVICES

We provide a comprehensive range of services such as design & build, fit-out contracting & constructions, manufacturing, interior exterior décor, and supplies trading, as well as project management.



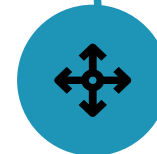
01 - Supplies Trading



02 - Design Services



03 - Construction Services



04 - Fit-out Service



05 - Project Management

01

SUPPLIES TRADING

“Global In’s Supplies Trading division is a beacon of innovation, providing an expansive array of the most cutting-edge interior and exterior design products and tools in the market. Our commitment to staying at the forefront of design trends is reflected in our curated design inspiration galleries, where creativity knows no bounds. As a trailblazer in the industry, we bring forth the latest and most avant-garde creations in interiors and exteriors, setting new standards for excellence.

Distinguished by a commitment to professionalism and quality, our product selection is a testament to our dedication to offering only the finest and most innovative solutions. We strive to create a dynamic and immersive experience for our clients, introducing them to a world where design meets ingenuity.

Our catalog is not merely a collection of supplies; it is a narrative of creativity and sophistication, a source of inspiration for the visionaries and taste-makers in the design realm.

Embark on a journey with Global In’s Supplies Trading, where each page unfolds a story of limitless possibilities, and each product embodies the ethos of innovation and distinction.

Our commitment is not only to meet expectations but to redefine and elevate them, making every space a canvas for unparalleled design excellence.

“

Global In Supplies: Shaping Spaces with Visionary Design Solutions, Pioneering a Legacy of Innovation and Timeless Elegance.”



02 DESIGN SERVICES

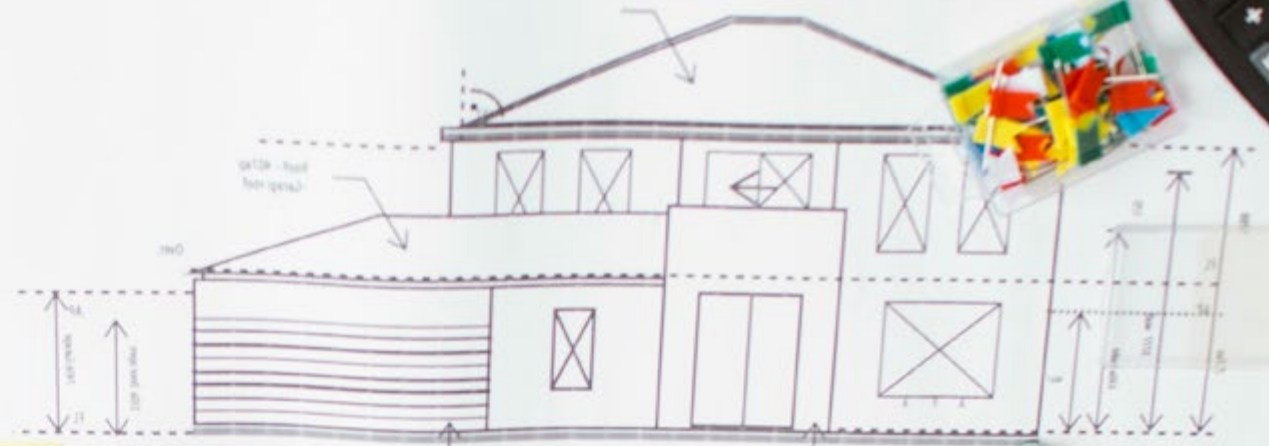
At Global In, we believe that great design is the catalyst for a better living experience. Our dedicated in-house Design & Graphics team is committed to delivering an unparalleled bespoke design service that goes beyond expectations. Collaborating closely with you, we strive to understand your unique requirements, ensuring a personalized and tailored approach to every project.

Our comprehensive services extend from meticulous space planning to the creation of captivating Interior Design visuals. With an emphasis on precision, our team crafts detailed layouts that serve as blueprints for transforming concepts into reality.

Immerse yourself in the innovation and creativity of our 3D drawing walk-throughs, providing a virtual journey through your envisioned space.

At every step, our commitment is to professionalism and excellence, ensuring that your design aspirations culminate in tangible, high-quality results. From conceptualization to construction, trust Global In to bring sophistication, innovation, and a touch of creativity to every corner of your living space.





03

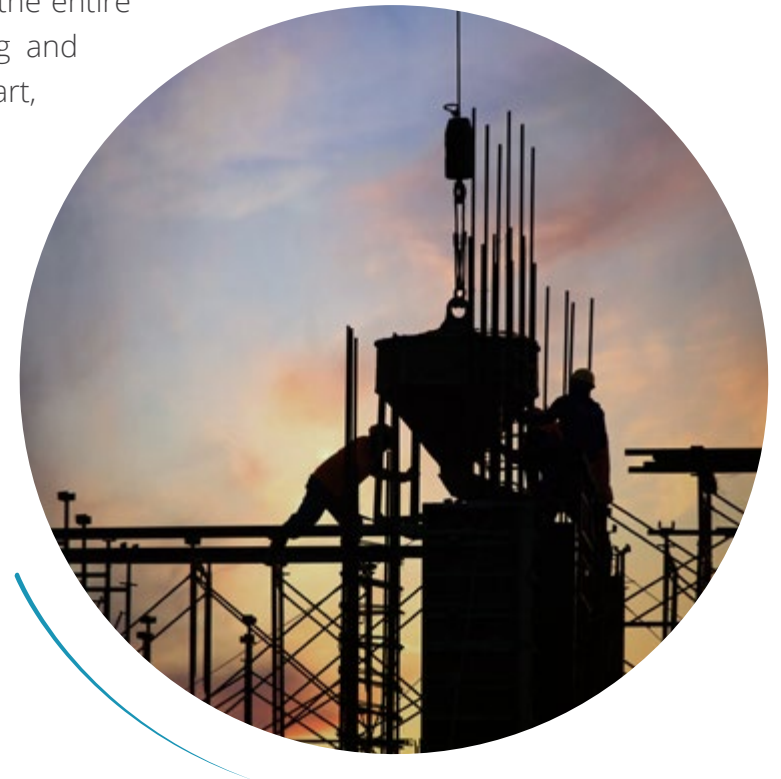
CONSTRUCTION SERVICES

Embarking on a journey of construction excellence, our seasoned construction service has evolved over the years, functioning as the conduit for transforming our designers' visions into tangible realities, all while adhering to strict timelines and budget constraints. At the core of our success lies a strategic fusion of building expertise and technical knowledge, allowing us to seamlessly align with the design brief, preemptively managing variances and addressing defects with precision and efficiency.

We take pride in infusing our commitment to quality and value throughout the entire design process. Guided by a dedication to excellence, our manufacturing and production partners boast cutting-edge facilities equipped with state-of-the-art, technology-driven machinery.

This enables us to achieve not only singular masterpieces but also facilitates multi-run production of premium quality finishes. Our emphasis on marrying modern technology with timeless craftsmanship ensures that each project reflects an unparalleled standard of sophistication and precision.

With a steadfast commitment to quality assurance and a holistic approach to construction, Global In sets the stage for a seamless fusion of design aspirations and construction ingenuity.





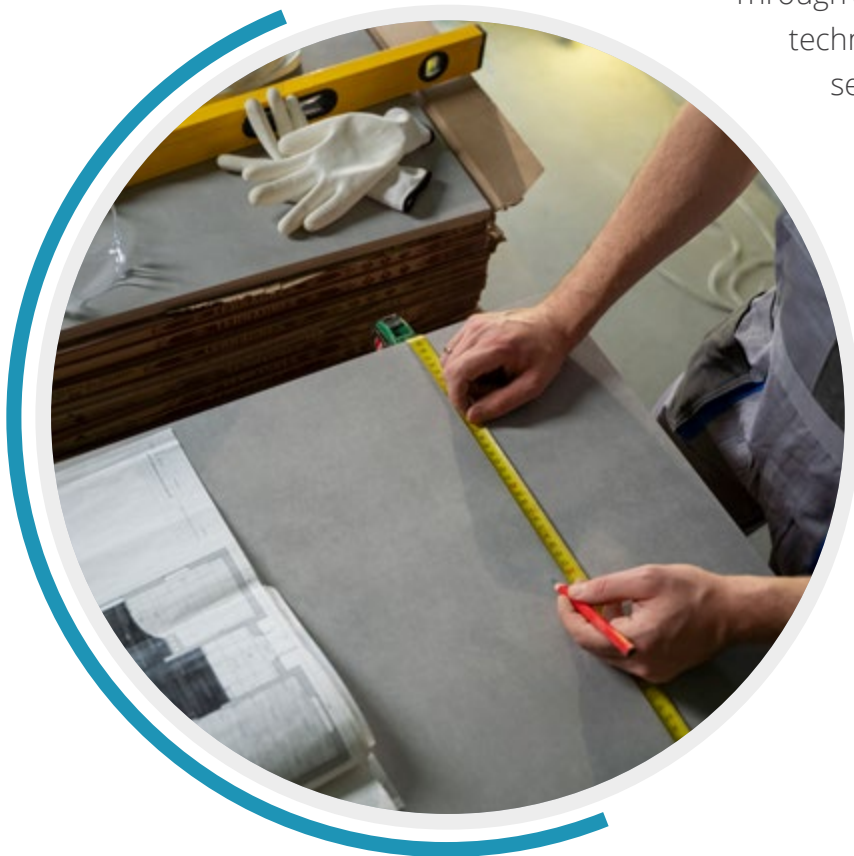
04 THE FIT-OUT SERVICES

Pioneering bespoke interior architectural fit-outs, Global In specializes in crafting transformation spaces for commercial, residential, retail, and hospitality projects. Our dedicated team operates tirelessly to provide inventive and cost-effective solutions tailored to meet our clients' diverse needs.

Through a seamless fusion of artistic interpretation, premium materials, and cutting-edge technology, we go beyond creating interiors – we craft immersive environments that seamlessly connect, inspire, and captivate people.

Our commitment to excellence extends beyond aesthetics to encompass functionality and innovation. With a meticulous blend of creativity and pragmatism, we breathe life into spaces, ensuring they not only meet but exceed expectations. Drawing from a rich tapestry of experience, our proven track record spans diverse fit-out projects across the region and beyond.

At Global In, we take pride in our ability to transcend conventional boundaries, pushing the limits of design to deliver extraordinary spaces. Join us on a journey where every fit-out project is an opportunity to redefine the ordinary and elevate the essence of interior architecture to new heights.





05

PROJECT MANAGEMENT

Global In's comprehensive project management service encompasses every step of the often-complicated process involved in design, construction, and renovation. A detailed, Step-by-Step plan is meticulously crafted to guide and execute each project with precision, ensuring a seamless journey from conception to completion. This strategic road-map is presented here, illustrating the stages of the design process in a transparent and structured manner. Our commitment is to empower you with the tools and insights necessary to bring your vision to life, promising not only completion but completion to the highest standard possible.

Our adept project management team serves as the orchestrator of your project, ensuring effective communication, strategic planning, and efficient execution at every turn. We understand that successful project management is a dynamic process, evolving to meet the unique demands of each endeavor.

Beyond conventional project oversight, we foster an environment of collaboration and transparency, establishing a partnership that prioritizes your goals and objectives.

With Global In's project management expertise, embark on a journey where each stage of the design process is a testament to our unwavering commitment to excellence and meticulous attention to detail. Let us guide you through a seamless, structured approach that transforms your vision into a reality, setting new benchmarks for industry standards.





— FAÇADE —

Construction Specialist with
Advanced Intensive Expertise

— SINCE 2012 —

FAÇADE CONSTRUCTION SPECIALISTS

Since 2012 , Our façade construction specialists, based in GCC Countries & middle East, Ruling & Managing Projects all over Lebanon UAE, Qatar & Kuwait..was founded by Group Of Architects and construction experts.

Through the GCC realization of technical façade constructions and sophisticated building envelopes, the company grew steadily. We See our professions as working closely With clients & our Architects to create the lasting values.

Our knowledge of Facades industrial Pre-made & pre-assembled Materials , production sophisticated Shapes with the Molding Technologies & Innovative Facades engineering Pave the way to New answers , and all with just one Aim “ the perfect realization of Superlative architecture”.

We had to Think in new dimensions , not just in terms of martials but also production process & constructions operations & logistics.



FAÇADE

CONSTRUCTION SOLUTIONS

FACADES COMPOSITES DECORATIVE

Cladding Global in also aims at manufacturing and designing GRC, GRP, GRG etc.... products using state of the art equipment and materials to cater the needs of the rapidly developing Qatari Market.

Over the years, we have successfully managed to innovate and evolve in this respective field and we're now in the business of producing a vast range of GRC, GRP, GRG composites Cladding products. The line includes moldings pillars, windows, blocks, patterns, and corning of unmatched quality in terms of both material and finishing.

We had built up a sizable portfolio that includes government projects, commercial buildings, and residential projects. The product line has got a flexible design pattern and can be customized as per our client's needs. Our Company employs a team of designers and craftsmen. Each member of our manufacturing team has over 10 years of experience in producing Composites claddings made of GRC, GRG, GRP... products and our designers are dedicated professionals that can cater to the need of any of our client's needs.

Designs can be produced or altered as per the consultant's direction and as per the project requirements. Our skilled manpower, with our experience and supervision enable us to manufacture and install for all kinds of small or mega projects in the given.



DEADLINE

Our portfolio is our guarantee, and quality is our symbol. Global in trad. & cont. now aspires to expand its manufacturing capacity and incorporate new techniques and machinery to provide better and cost-effective solutions to client's. Our aim is to provide unparalleled quality and a vast and flexible design range to cater for construction boom in the Qatari market.

GRC has an endless variety of decorative and ornamental shapes and forms to offer such as: GRC Claddings, Cornice, GRC Parapets, perforated patterned Screens, Domes, Copings, Column Covers, Pergola (Sunshade Panels). GRC Planters, GRC Balustrades

Characteristics: Highly comprehensive strength, ability to produce fine, surface details, low maintenance requirements, low coefficient of thermal expansion, high fire resistance.



**Crafting Excellence, Defining Quality.
Global In Trad. & Cont. - Your Symbol
of Innovation in GRC. ”**



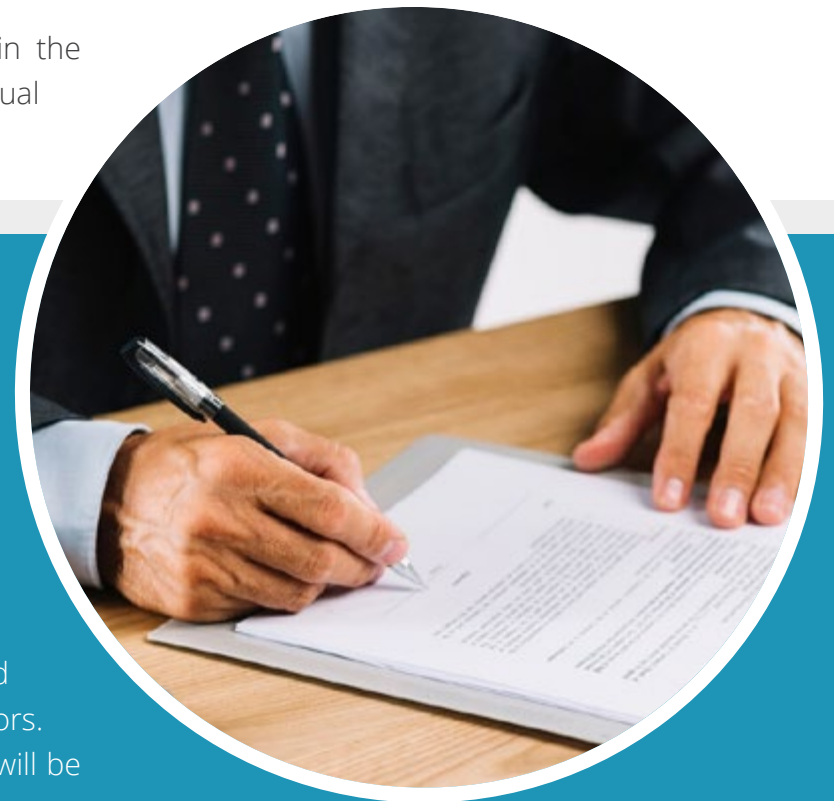
QUALITY POLICY

Global in aims to continually improve the quality of the products and services it provides to clients, and to supply these products and services efficiently and at a reasonable cost. The company is committed to consistently conforming to customers' requirements in all respects. To achieve this, it is the policy of the company to establish and maintain a documented Integrated Services management system, which is an integral part of the company's operations.

The company is committed to complying with the requirements laid down within the Integrated Services management system. The company is committed to the continual

review, assessment and improvement of the effectiveness of the management system through the systematic analysis of data and the subsequent setting of objectives and targets for improvement. Objectives and targets will be reviewed at regular intervals to ensure effective implementation. The management shall communicate the effectiveness of the management system to all levels within the company.

Attainment of the standards embodied in the system requires the commitment and participation of all members of the company as well as suppliers and subcontractors. To this end all employees of the company as well its suppliers and subcontractors, will be committed to continual improvement and customer satisfaction.



HEALTH, SAFETY AND ENVIRONMENTAL POLICY

The Directors of this company regard the promotion of health and safety measures and of appropriate programmers to maintain a healthy environment as a mutual objective for management and employees at all levels.

It is, therefore, this company's policy to review costs as appropriate, to do all that is reasonable to prevent personal injury and damage to property and to protect staff and the general public from foreseeable work hazards including environmental nuisances. In particular, the company has a responsibility:

1. To provide and maintain safe and healthy working conditions for all of its employees.
2. To make available all necessary safety devices and protective equipment to enable safe working activities to be undertaken.
3. To maintain a constant and continuing interest in health and safety matters applicable to the company's activities, in particular by consulting and involving employees or their representatives wherever possible.
4. The co-operation of all employees is essential to enable the company to fulfill its legal obligations and responsibilities.
5. To provide the necessary training and instruction to enable employees to perform their work safely and efficiently.
6. The implementation of this policy is the responsibility of Directors, Managers and Supervisors. It is the company's continuing aim to promote and maintain a high standard of safety to minimize personal injuries and to safeguard the health and safety of their employees and the public. An annual safety review will monitor the effectiveness of the company policy to ensure that the general procedures and policies herein are implemented and maintained. The responsibility for implementing this policy lies with individual directors and management. They are responsible for ensuring compliance with the policy in their own area of control.

GLOBAL IN CAPABILITIES

Global in has an experienced full-time safety team and an excellent safety record. It uses its experience and business maturity to provide outstanding client services for successful construction of new and renovated facilities. We're skilled at fulfilling clients' needs through lean construction, integrated project delivery, design-build, construction management, and as a general contractor.

GLOBAL IN SELF-PERFORMS A PORTION OF THE WORK WE MANAGE:

- Our skilled tradespersons include Laborers, Iron Workers, Carpenters, Operating Engineers, Teamsters and Cement Masons.

We excel in concrete construction and restoration of all types. Global in can provide all kind of materials for construction sites and projects, such as joinery, glazing and aluminum, GRC (composite decorative claddings), paint, tiles insulation material and much more, through its local and international partners and factories in the GCC, middle east, Asia, Europe, and America.



FINANCE



MEETING
@ 9.30 AM

FINANCIAL CAPABILITY

At 'Global In,' our state of readiness and robust financial capabilities uniquely position us to adeptly handle projects, be they expansive or intricate. From meticulous planning to flawless execution, we ensure an unwavering commitment to excellence at every step.

With a financial backbone that reflects stability and foresight, 'Global In' stands poised not only to meet but to surpass expectations. Our substantial reserve funding acts as a testament to our dedication, allowing for over-expansion and the efficient execution of large-scale orders, all with the ultimate goal of providing timely satisfaction to our valued clients.

Beyond financial prowess, we pride ourselves on adaptability. 'Global In' possesses the agility to amplify our capital through strategic alliances with overseas partners and suppliers, enriching our global perspective and enhancing our capabilities in project management.

In essence, 'Global In' is more than a service provider; we are a fully invested partner in the success of our clients. Regardless of project size or scale, our commitment remains unwavering, turning each project into a collaborative journey toward excellence and unparalleled client satisfaction.





GLOBAL IN EXPERIENCE

www.gtc-qatar.com



BEAUTY SALON

BEAUTY SALON

EXTERIOR DESIGN



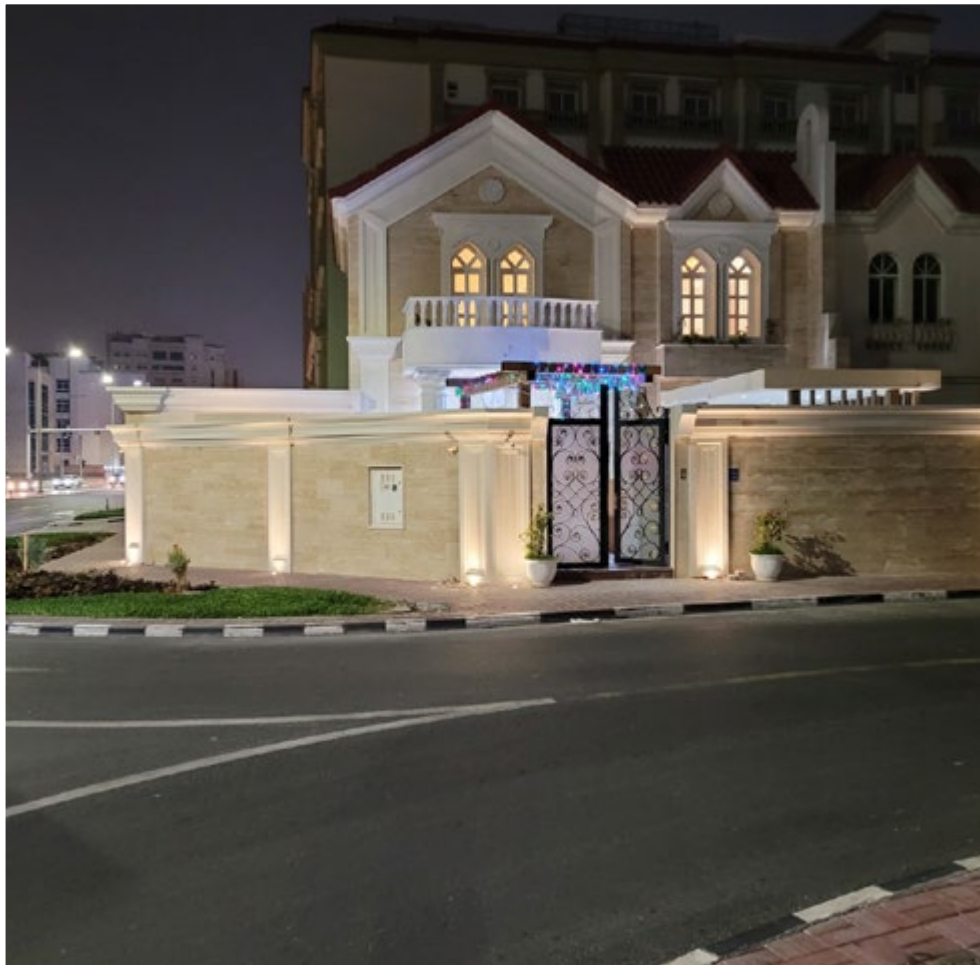
BEAUTY SALON

EXTERIOR DESIGN



BEAUTY SALON

EXTERIOR DESIGN



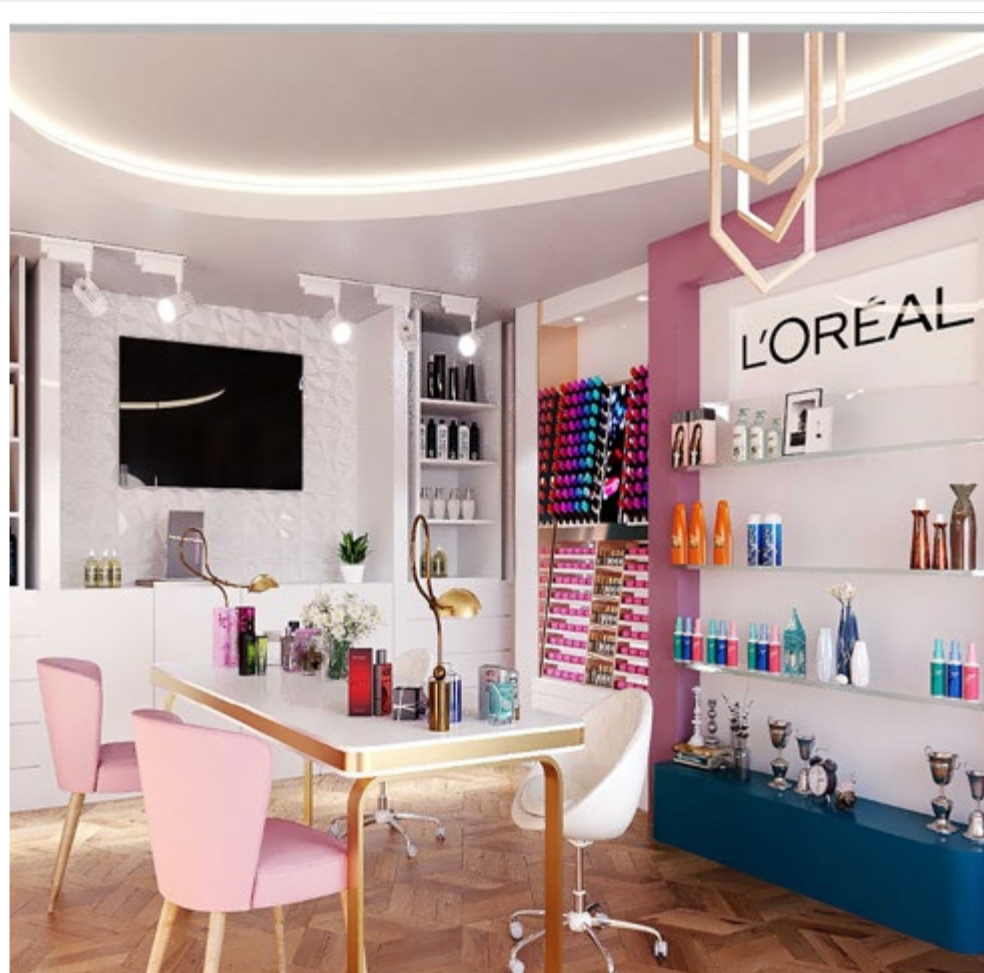
BEAUTY SALON

EXTERIOR DESIGN



BEAUTY SALON

INTERIOR DESIGN



BEAUTY SALON

INTERIOR DESIGN



BEAUTY SALON

INTERIOR DESIGN



BEAUTY SALON

INTERIOR DESIGN



BEAUTY SALON

INTERIOR DESIGN





HILTON GARDEN INN

HILTON GARDEN INN

EXTERIOR DESIGN



HILTON GARDEN INN

EXTERIOR DESIGN



HILTON GARDEN INN

INTERIOR DESIGN



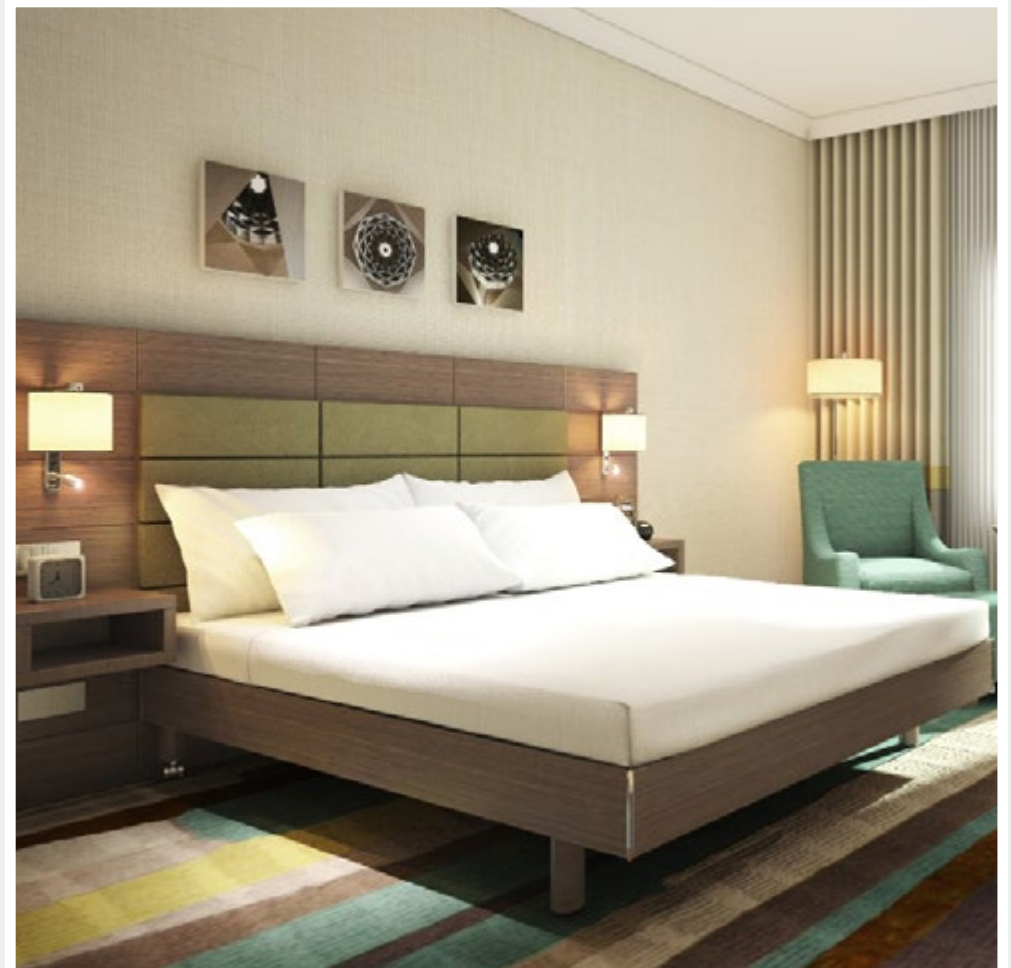
HILTON GARDEN INN

INTERIOR DESIGN



HILTON GARDEN INN

INTERIOR DESIGN





KINDER ACADEMY NURSERY

KINDER ACADEMY NURSERY

EXTERIOR DESIGN



KINDER ACADEMY NURSERY

INTERIOR DESIGN



KINDER ACADEMY NURSERY

INTERIOR DESIGN



KINDER ACADEMY NURSERY

INTERIOR DESIGN

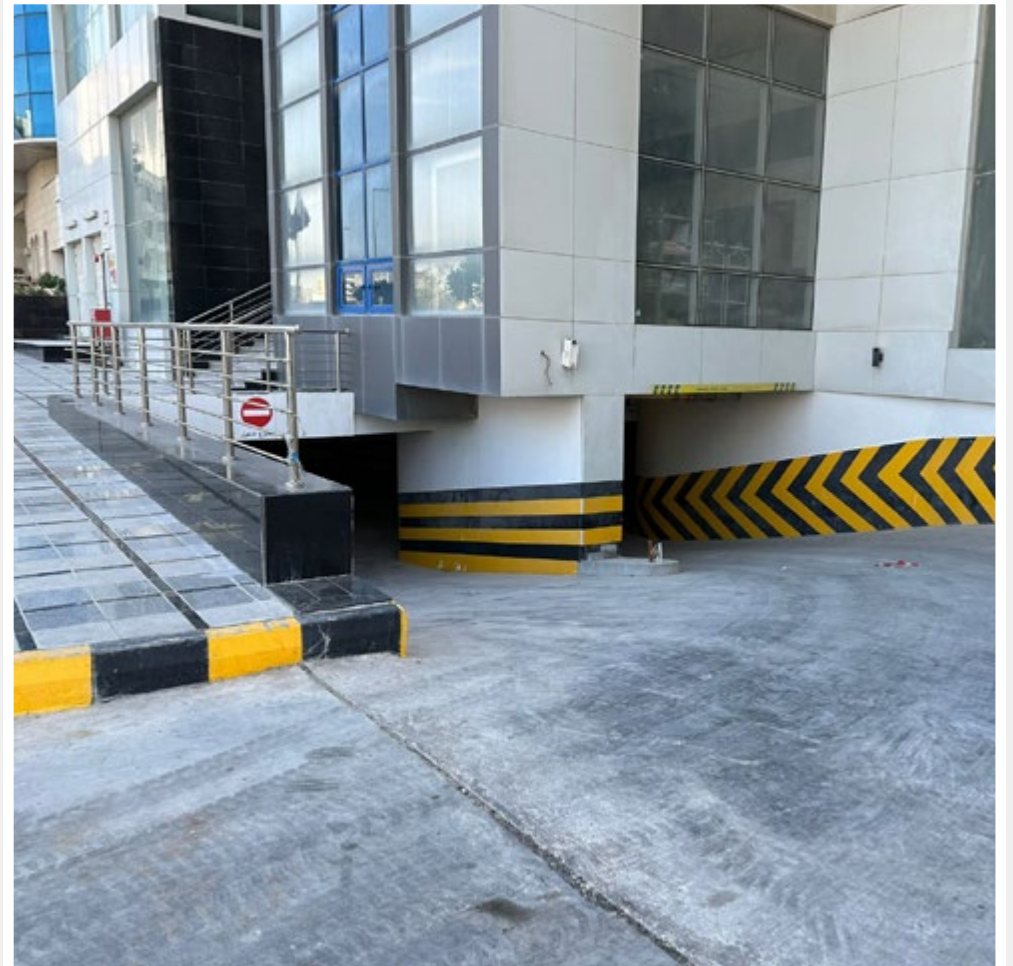




WYNDAM REGENCY HOTEL

WYNDAM REGENCY HOTEL

EXTERIOR DESIGN



WYNDAM REGENCY HOTEL

INTERIOR DESIGN



WYNDAM REGENCY HOTEL

INTERIOR DESIGN





AL-KHARAITIYAT VILLA

AL-KHARAITIYAT VILLA

EXTERIOR DESIGN



AL-KHARAITIYAT VILLA

EXTERIOR DESIGN



AL-KHARAITIYAT VILLA

EXTERIOR DESIGN



AL-KHARAITIYAT VILLA

EXTERIOR DESIGN



AL-KHARAITIYAT VILLA

EXTERIOR DESIGN



AL-KHARAITIYAT VILLA

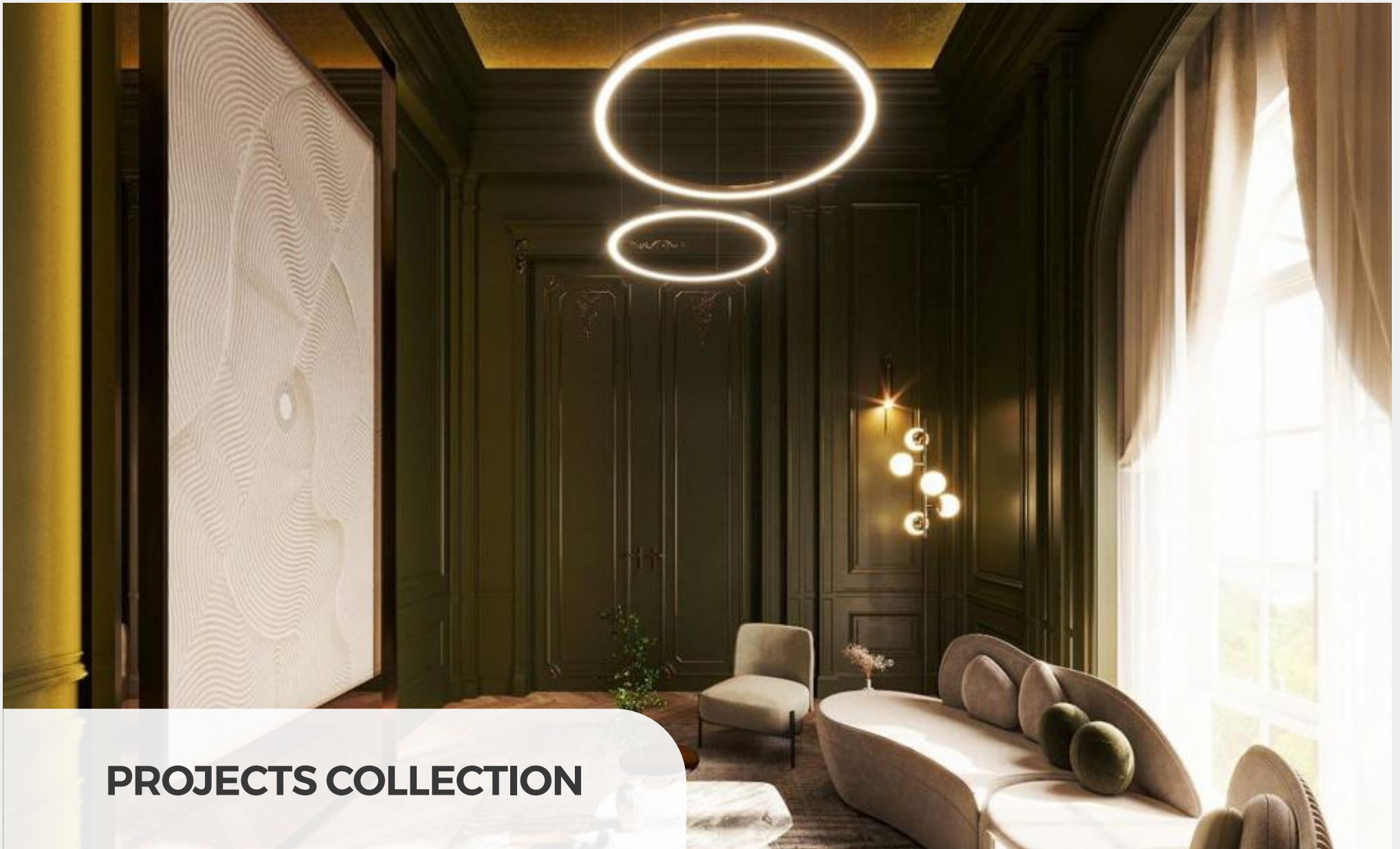
EXTERIOR DESIGN



AL-KHARAITIYAT VILLA

EXTERIOR DESIGN





PROJECTS COLLECTION

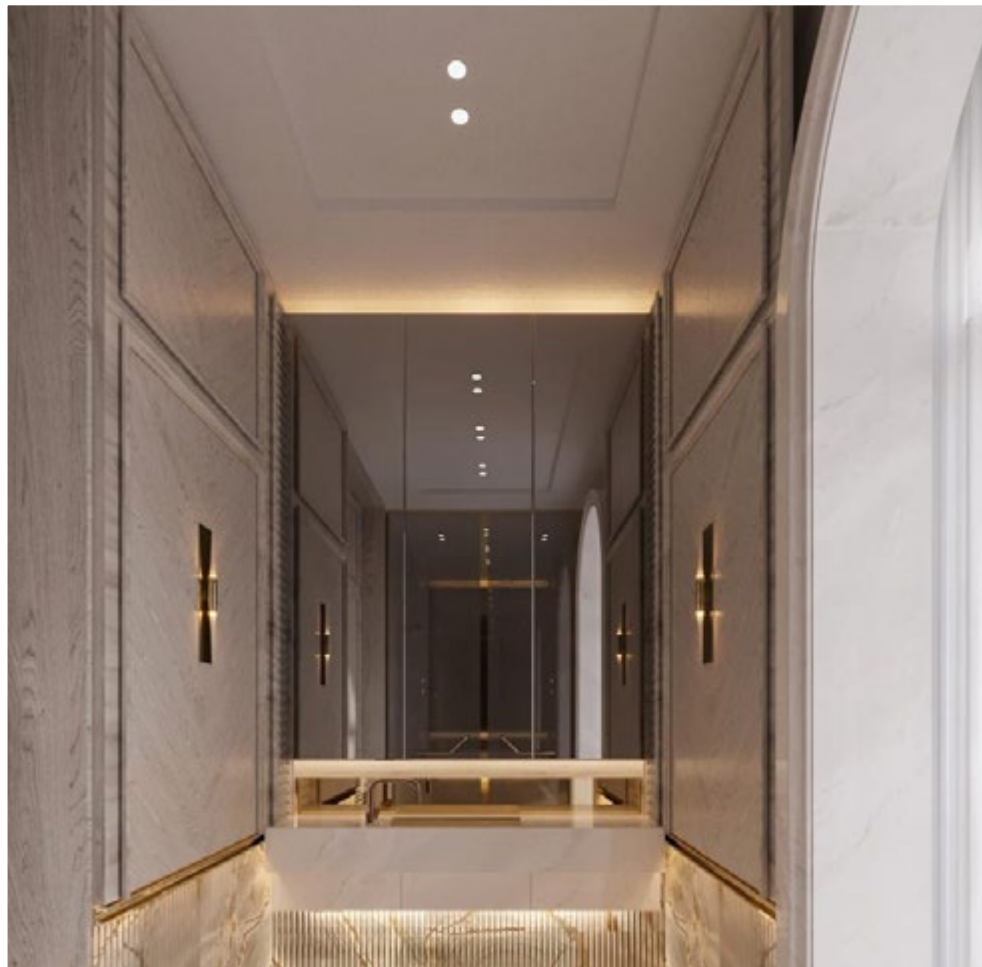
PROJECTS COLLECTION

INTERIOR DESIGN



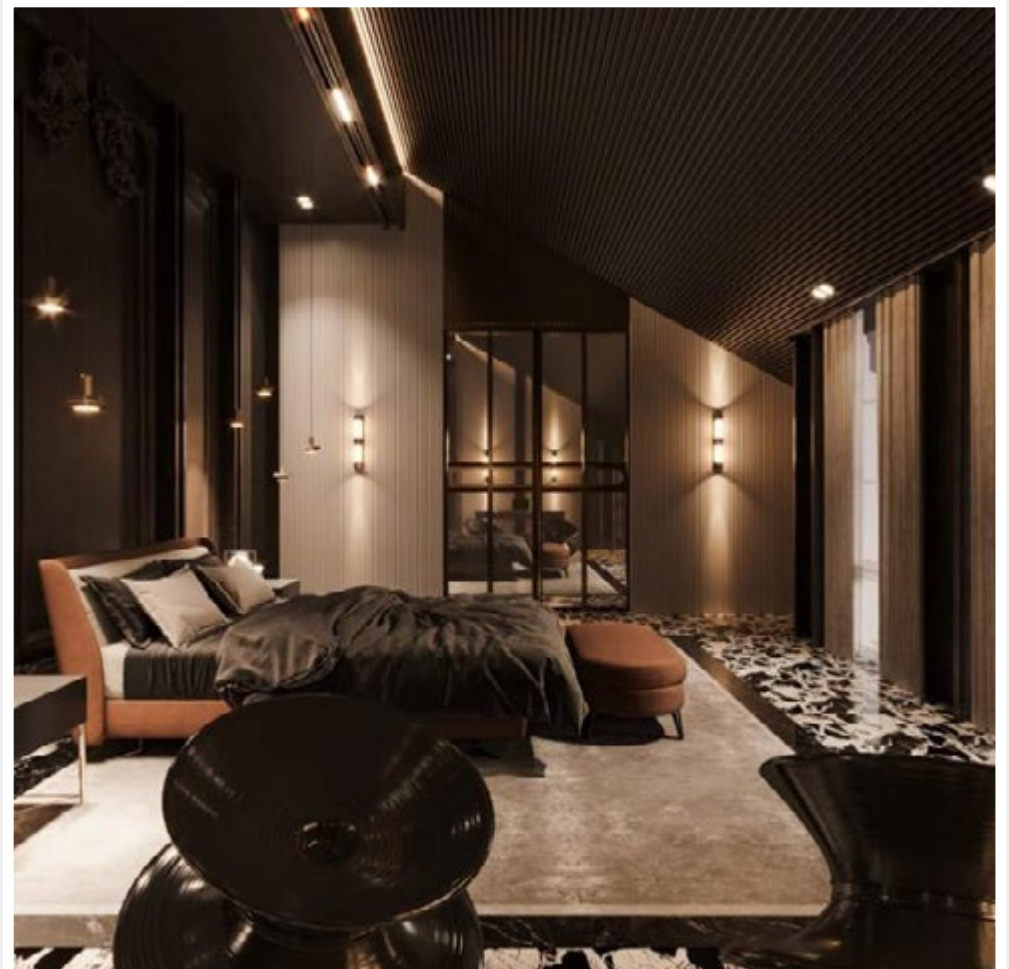
PROJECTS COLLECTION

INTERIOR DESIGN



PROJECTS COLLECTION

INTERIOR DESIGN



PROJECTS COLLECTION

INTERIOR DESIGN



PROJECTS COLLECTION

INTERIOR DESIGN



PROJECTS COLLECTION

INTERIOR DESIGN



PROJECTS COLLECTION

INTERIOR DESIGN



PROJECTS COLLECTION

INTERIOR DESIGN



PROJECTS COLLECTION

INTERIOR DESIGN



PROJECTS COLLECTION

INTERIOR DESIGN



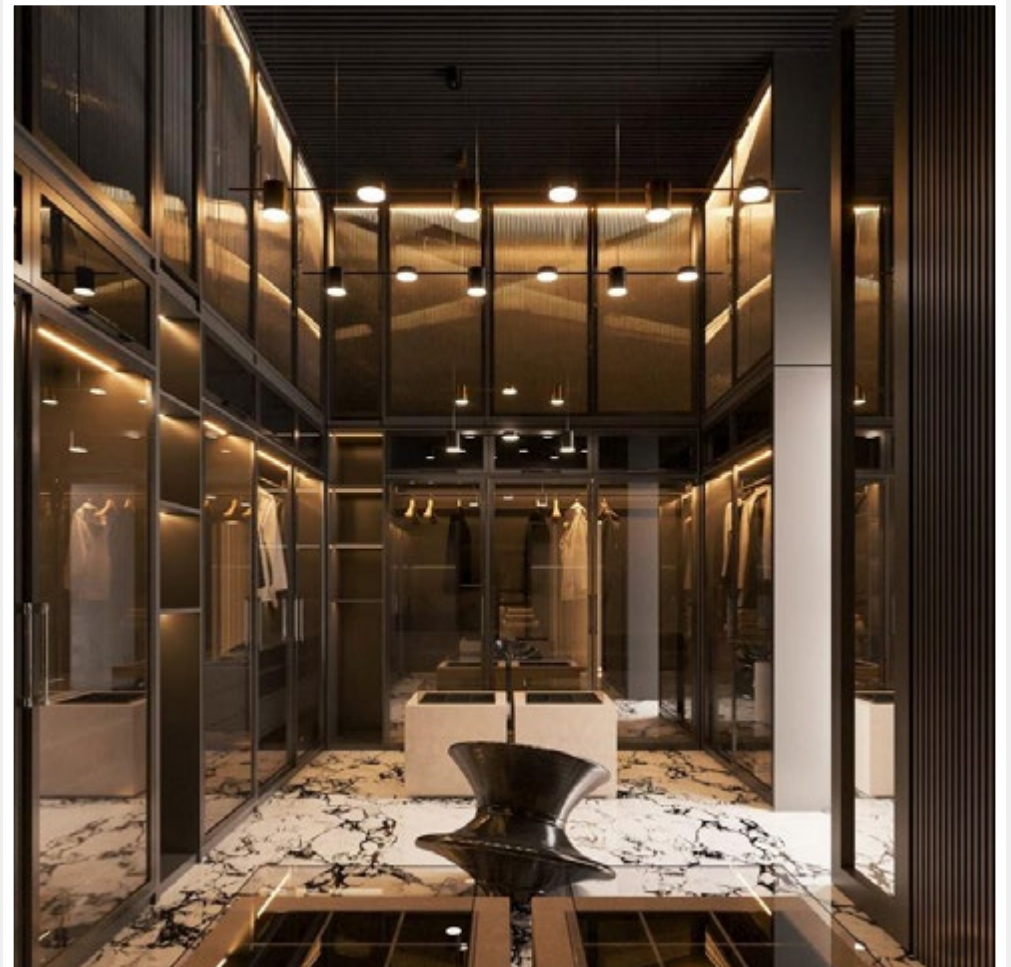
PROJECTS COLLECTION

INTERIOR DESIGN



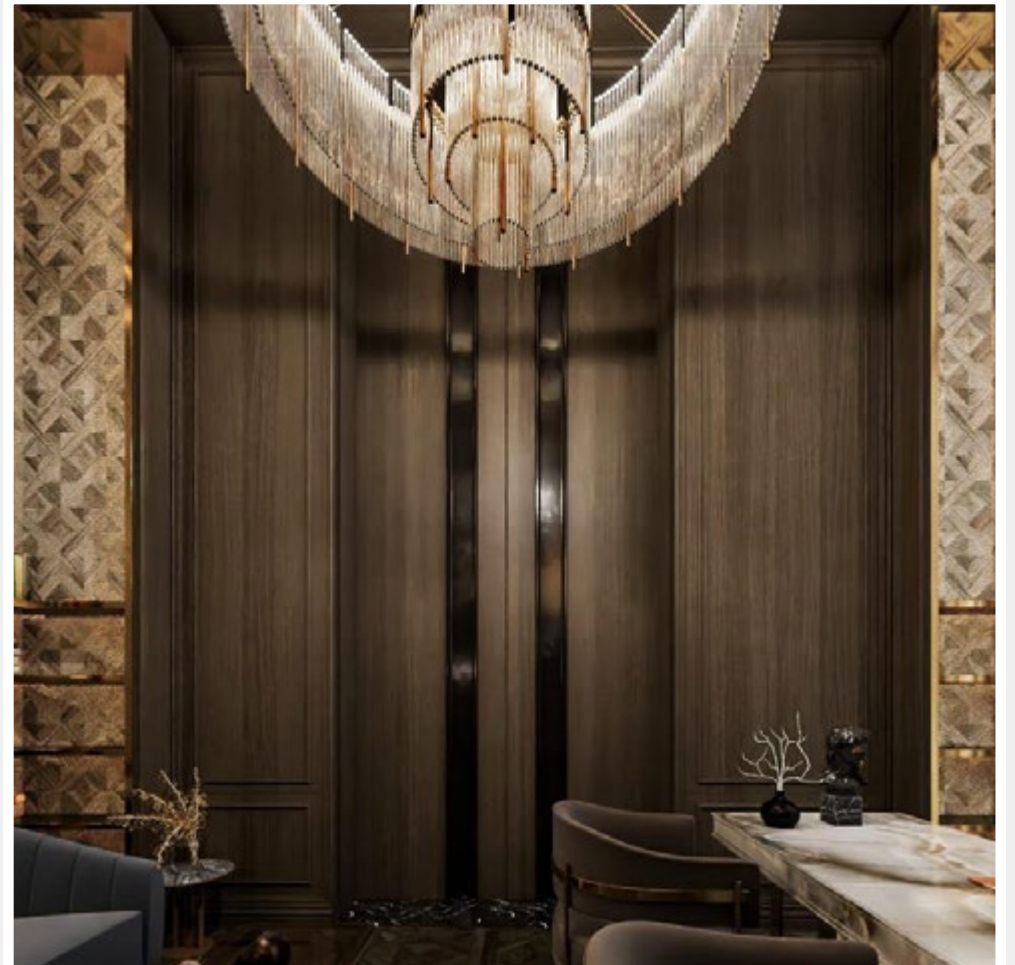
PROJECTS COLLECTION

INTERIOR DESIGN



PROJECTS COLLECTION

INTERIOR DESIGN



PROJECTS COLLECTION

INTERIOR DESIGN



PROJECTS COLLECTION

INTERIOR DESIGN





GLOBAL INN'S DOCUMENTS

At Global Inn, we take pride in our commitment to legality and transparency. Our company profile is adorned with a series of reputable registration certificates, serving as a testament to our legal standing.

These certificates underscore our dedication to operating within the bounds of the law, assuring our clients and partners that they are engaging with a legitimate and trustworthy entity.

As we continue to uphold the highest standards, these certifications stand as a mark of our unwavering commitment to integrity and regulatory compliance.





Registration and Commercial
Licenses Department

وزارة الاقتصاد والتجارة
Ministry of Economy and Commerce

إدارة التسجيل
والتراخيص التجارية

مستخرج ببعض بيانات السجل التجاري

الأنشطة التجارية

الرقم	اسم النشاط	الرقم	اسم النشاط
4659004	التجارة في القوالب بكافة أنواعها	4752001	تجارة السفارات
		4100001	الإنشاءات والمقاولات العامة

07/08/2023 : تاريخ الطباعة:
No 1 of 1 : صفحة رقم:

Registration and Commercial
Licenses Department



وزارة الاقتصاد والتجارة
Ministry of Economy and Commerce

إدارة التسجيل
والتراخيص التجارية

رخصة تجارية



رقم الرخصة: 233900
الأسم التجاري: حولان ان للتجارة والمقاولات وشركة
تاريخ اصدار الرخصة: 29/12/2022
تاريخ انتهاء الرخصة: 24/12/2023
رقم السجل التجاري: 179333
نوع المنشأة التجارية: شركة
الصفة التجارية:

بيانات المدير المسؤول:

اسم المدير: صلاح محمود محمد عبدالدايم

المستول:

رقم الإيذات: 28381805351

بيانات الموقع:

تصنيف الموقع:

نوع الموقع:

المنطقة:

الشارع:

رقم الشارع:

الأنشطة التجارية:

جنسية المدير المسئول: مصر

نموذج حجم المنشأة التجارية:

عقار رقم: 53

رقم الدور/الوحدة: 2

اسم مالك العقار: حمد حاسم حر محمد ال ثاني

نوع الرخصة: دائمة

وصف العنوان: تجارة الوحدة

الرقم	اسم النشاط	الرقم	اسم النشاط
4659004	التجارة في القوالب بكافة أنواعها	4752001	تجارة السفارات
		4100001	الإنشاءات والمقاولات العامة



Page 2 of 2
رقم السجل: 179333



تشهد غرفة تجارة وصناعة قطر بان المنشأة المذكورة اعلاه مسجلة لديها

Qatar Chamber certifies that the above mentioned establishment has been registered




مدير السجل والتراخيص





COMPANY PROFILE 2023 - 2024

CONTACT US

 Mirqab Mall , Zone 39 , Building No 53 ,
Street 840 , Block B , 2nd Floor, Office No 202

 +974 - 4415 - 1177 | +974 - 5511 - 1507

 info@gtc-qatar.com

 www.gtc-qatar.com